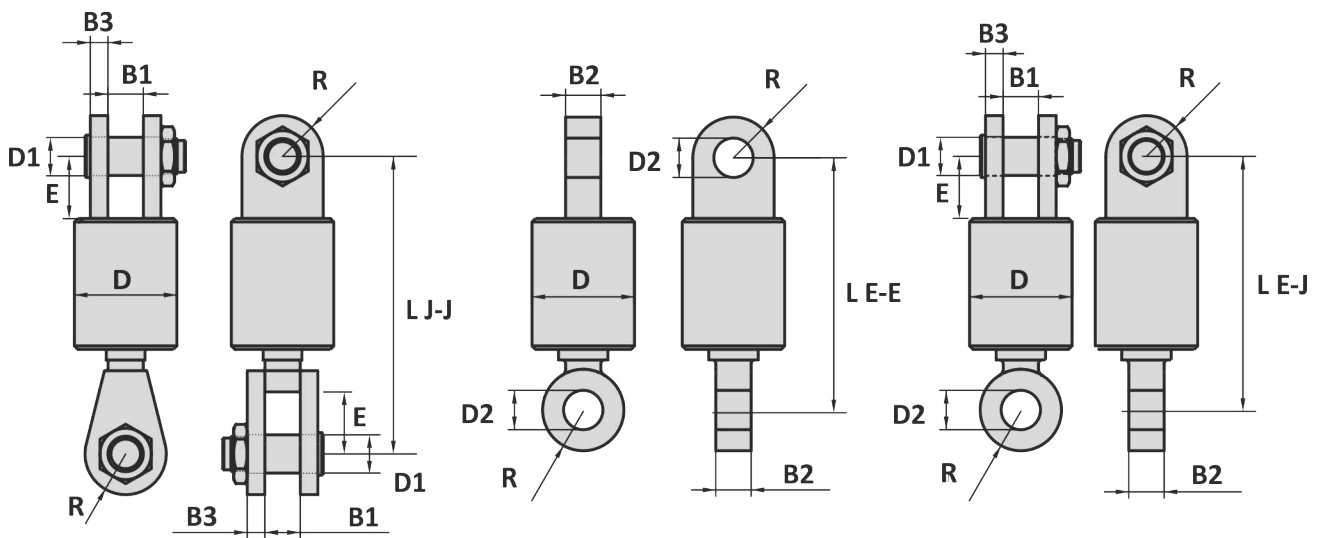
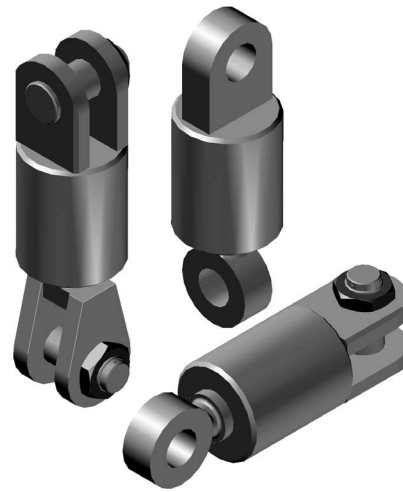


Material : High tensile steel
 Safety factor : 5 times
 Finish : Painted
 Temperature range : -4°F up to +392°F
 Standard certification : Certificate of Conformity
 3.1 material certificate EN 10204



Jaw - Jaw

Eye - Eye

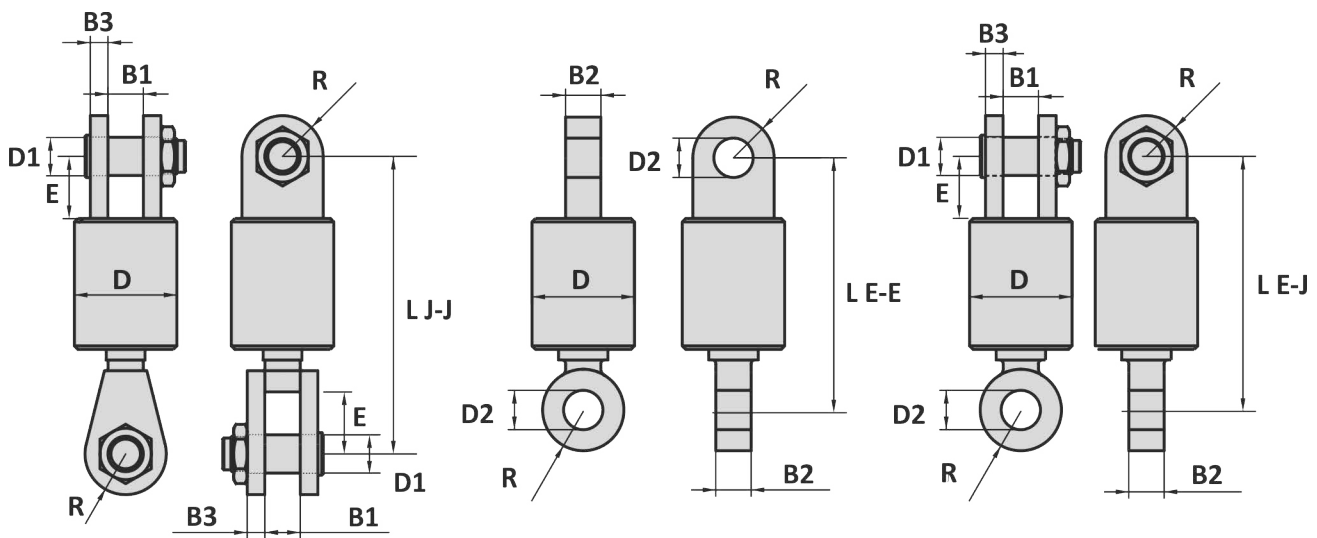
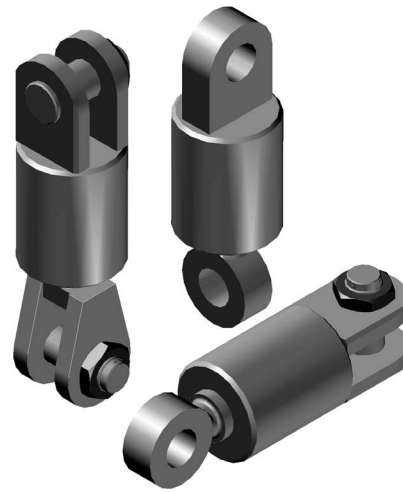
Eye - Jaw

| Art. No. Jaw-Jaw | Art. No. Eye-Eye | Art. No. Eye-Jaw | WLL ton | B1 inch | B2 inch | B3 inch | D1 inch | D2 inch | D inch | E inch | L inch | L inch | L inch | R inch | Weight J-J lbs | Weight E-E lbs | Weight E-J lbs |
|---------------------|---------------------|---------------------|------------|------------|------------|------------|------------|------------|-----------|-----------|-----------|-----------|-----------|-----------|----------------------|----------------------|----------------------|
| 40110017 | 40115017 | 40119017 | 17 | 2 1/16 | 2 3/2 | 1 3/32 | 2 13/32 | 2 1/16 | 6 11/16 | 5 1/8 | 18 29/32 | 16 1/8 | 18 29/32 | 2 3/4 | 130 | 97 | 121 |
| 40110025 | 40115025 | 40119025 | 25 | 3 | 2 3/4 | 1 3/16 | 2 3/4 | 2 27/32 | 7 15/32 | 5 23/32 | 22 1/4 | 17 23/32 | 21 1/16 | 2 3/4 | 185 | 141 | 170 |
| 40110035 | 40115035 | 40119035 | 35 | 3 9/16 | 3 3/2 | 1 9/16 | 3 3/2 | 3 3/2 | 9 27/32 | 6 7/8 | 27 3/2 | 21 1/4 | 25 3/8 | 3 11/32 | 370 | 293 | 344 |
| 40110055 | 40115055 | 40119055 | 55 | 4 5/16 | 3 15/16 | 1 31/32 | 3 15/16 | 4 1/16 | 10 5/8 | 6 7/8 | 31 1/2 | 27 5/2 | 30 29/32 | 4 7/8 | 604 | 470 | 560 |
| 40110070 | 40115070 | 40119070 | 70 | 4 5/16 | 3 15/16 | 2 5/32 | 4 1/4 | 4 3/8 | 11 13/32 | 6 11/16 | 31 7/8 | 27 1/16 | 31 7/8 | 4 13/32 | 712 | 556 | 606 |
| 40110085 | 40115085 | 40119085 | 85 | 5 1/8 | 4 23/32 | 2 15/16 | 5 | 5 1/8 | 13 25/32 | 6 7/8 | 34 1/4 | 32 11/16 | 33 23/32 | 5 5/16 | 1166 | 891 | 988 |
| 40110120 | 40115120 | 40119120 | 120 | 6 3/32 | 5 1/2 | 3 9/16 | 6 | 6 3/32 | 16 15/16 | 7 15/32 | 35 1/2 | 36 7/32 | 36 13/32 | 6 11/16 | 1876 | 1462 | 1618 |
| 40110150 | 40115150 | 40119150 | 150 | 6 11/16 | 6 5/16 | 3 15/16 | 7 | 7 1/8 | 18 1/2 | 8 1/4 | 39 1/2 | 37 13/16 | 40 7/8 | 7 15/32 | 2579 | 1967 | 2183 |
| 40110200 | 40115200 | 40119200 | 200 | 7 15/32 | 6 11/16 | 4 5/16 | 7 15/32 | 7 19/32 | 20 7/8 | 9 27/32 | 45 9/32 | 41 3/4 | 46 7/16 | 8 23/32 | 3805 | 2698 | 3139 |
| 40110250 | 40115250 | 40119250 | 250 | 8 1/4 | 7 15/32 | 4 23/32 | 9 25/32 | 9 31/32 | 23 3/8 | 11 1/32 | 48 13/16 | 46 1/16 | 51 3/16 | 10 1/4 | 5703 | 3829 | 4608 |
| 40110300 | 40115300 | 40119300 | 300 | 9 27/32 | 7 15/32 | 6 7/8 | 11 13/32 | 11 17/32 | 29 19/32 | 11 13/16 | 53 3/32 | 50 3/8 | 56 11/16 | 11 13/16 | 9524 | 6105 | 7579 |

Tolerance: ± 5%, machined parts ± 1/32 inch

12-07-2017

Material : High tensile steel
 Safety factor : 5 times
 Finish : Painted
 Temperature range : -20°C up to +200°C
 Standard certification : Certificate of Conformity
 3.1 material certificate EN 10204



Jaw - Jaw

Eye - Eye

Eye - Jaw

| Art. No. Jaw-Jaw | Art. No. Eye-Eye | Art. No. Eye-Jaw | WLL ton | B1 mm | B2 mm | B3 mm | D1 mm | D2 mm | D mm | E mm | L mm | L mm | L mm | R mm | Weight kg | Weight kg | Weight kg |
|---------------------|---------------------|---------------------|------------|----------|----------|----------|----------|----------|---------|---------|---------|---------|---------|---------|--------------|--------------|--------------|
| | | | | | | | | | | | J-J | E-E | E-J | | J-J | E-E | E-J |
| 40110017 | 40115017 | 40119017 | 17 | 65 | 55 | 28 | 63 | 65 | 170 | 130 | 480 | 410 | 480 | 70 | 59 | 44 | 55 |
| 40110025 | 40115025 | 40119025 | 25 | 76 | 70 | 30 | 70 | 72 | 190 | 145 | 565 | 450 | 535 | 70 | 84 | 64 | 77 |
| 40110035 | 40115035 | 40119035 | 35 | 90 | 80 | 40 | 80 | 82 | 250 | 175 | 690 | 540 | 645 | 85 | 168 | 133 | 156 |
| 40110055 | 40115055 | 40119055 | 55 | 110 | 100 | 50 | 100 | 103 | 270 | 175 | 800 | 690 | 785 | 105 | 274 | 213 | 254 |
| 40110070 | 40115070 | 40119070 | 70 | 110 | 100 | 55 | 108 | 111 | 290 | 170 | 810 | 700 | 810 | 115 | 323 | 252 | 275 |
| 40110085 | 40115085 | 40119085 | 85 | 130 | 120 | 75 | 127 | 130 | 350 | 175 | 870 | 830 | 855 | 135 | 529 | 404 | 448 |
| 40110120 | 40115120 | 40119120 | 120 | 155 | 140 | 90 | 152 | 155 | 430 | 190 | 890 | 920 | 925 | 170 | 851 | 663 | 734 |
| 40110150 | 40115150 | 40119150 | 150 | 170 | 160 | 100 | 178 | 181 | 470 | 210 | 1003 | 960 | 1038 | 190 | 1170 | 892 | 990 |
| 40110200 | 40115200 | 40119200 | 200 | 190 | 170 | 110 | 190 | 193 | 530 | 250 | 1150 | 1060 | 1180 | 220 | 1726 | 1224 | 1424 |
| 40110250 | 40115250 | 40119250 | 250 | 210 | 190 | 120 | 250 | 253 | 600 | 280 | 1240 | 1170 | 1300 | 260 | 2587 | 1737 | 2090 |
| 40110300 | 40115300 | 40119300 | 300 | 250 | 190 | 175 | 290 | 293 | 750 | 300 | 1350 | 1280 | 1440 | 300 | 4320 | 2769 | 3438 |

Tolerance: ± 5%, machined parts ± 1 mm

12-07-2017